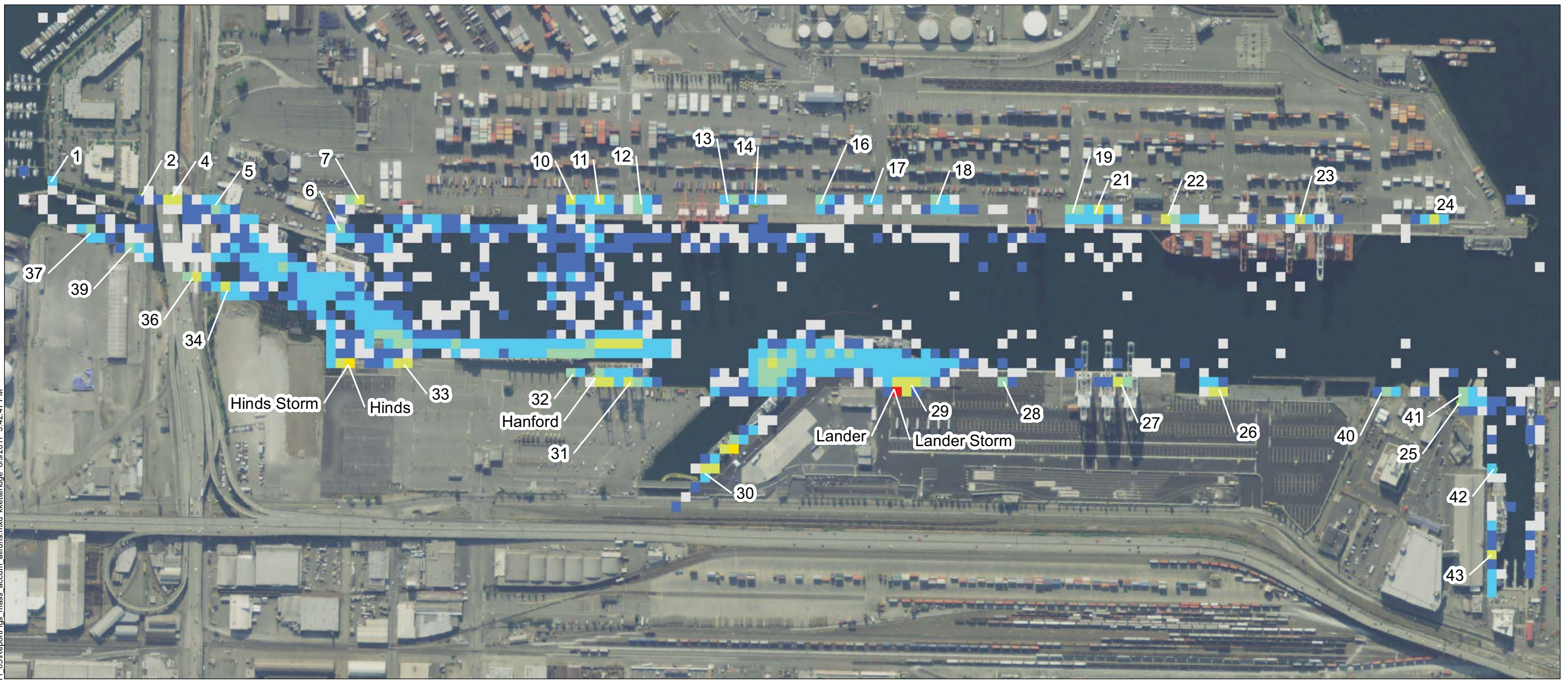


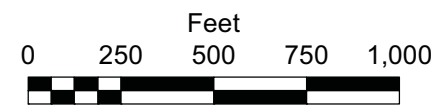
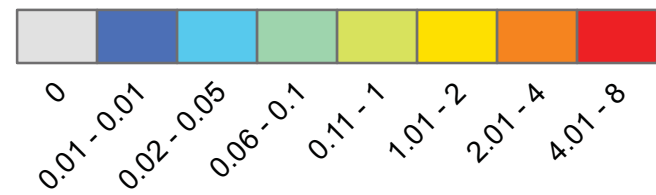
R:\Jobs\060003-01 East Waterway\_SedTrans\Maps\2011\_05\ReportFigs\_mass\_accum\_allruns.mxd kketteridge 6/9/2011 3:42:47 PM



**LEGEND**

● PTM Outfall Locations

**kg / sq ft**

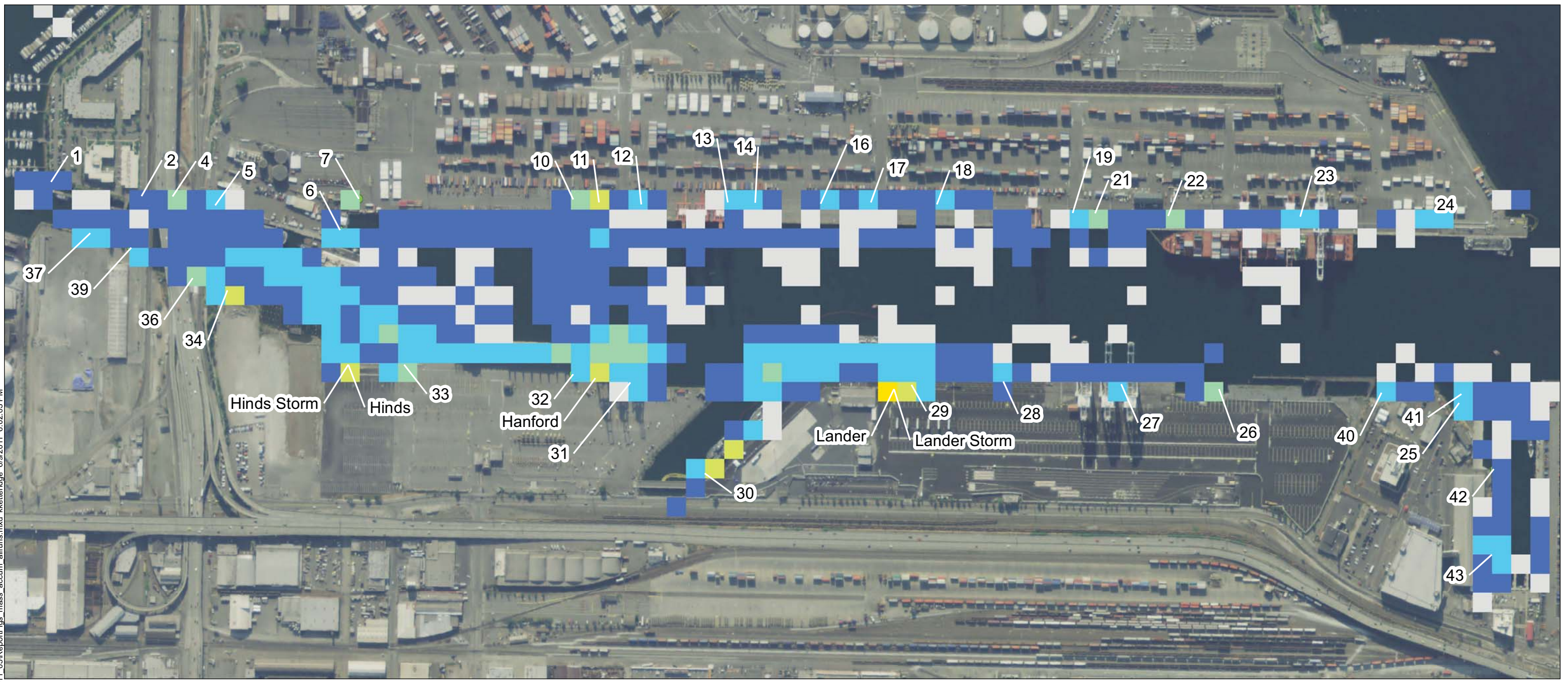


**NOTES:**

1. Deposition data (points) output from PTM model simulation has been represented by a 50 ft x 50 ft resolution raster map of mass accumulation per unit area (kg/sq ft)
2. Mass accumulation represents deposition over the simulation time (1 month with sources included, 2 weeks with sources turned off, for a total of 42 days).
3. Lander, Hanford, and Hines are CSOs.
4. Outfall numbers (names) coorespond to drainage basins.



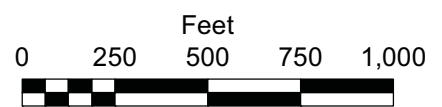
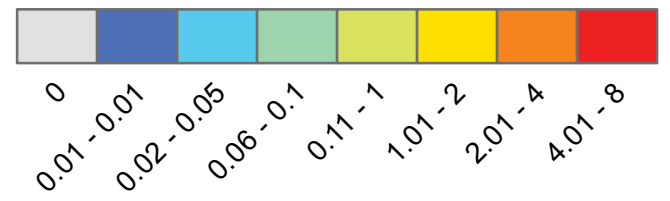
R:\Jobs\060003-01\_East\_Waterway\_SedTrans\Maps\2011\_05\ReportFigs\_mss\_accum\_allruns.mxd kkettridge 6/9/2011 6:02:03 PM



**LEGEND**

● PTM Outfall Locations

**kg / sq ft**

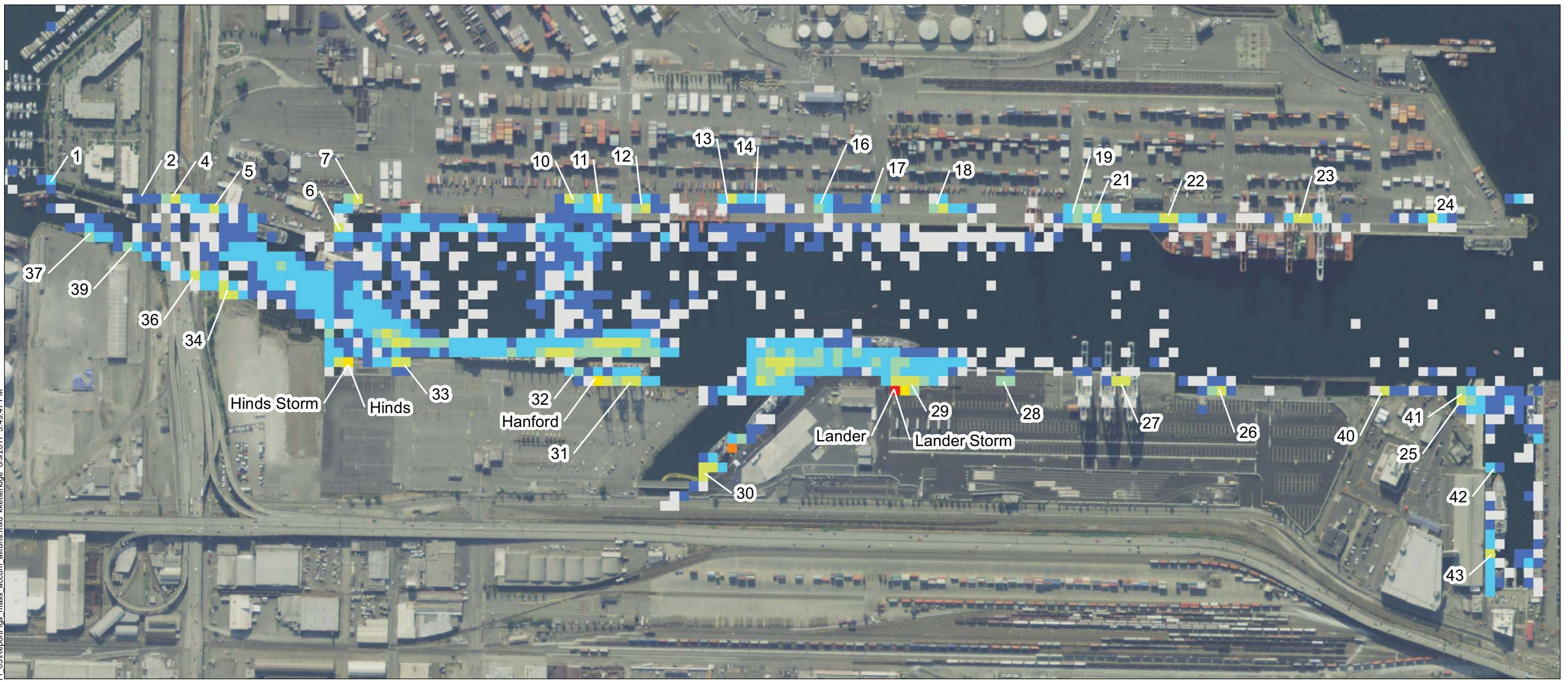


**NOTES:**

1. Deposition data (points) output from PTM model simulation has been represented by a 100 ft x 100 ft resolution raster map of mass accumulation per unit area (kg/sq ft)
2. Mass accumulation represents deposition over the simulation time (1 month with sources included, 2 weeks with sources turned off, for a total of 42 days).
3. Lander, Hanford, and Hines are CSOs.
4. Outfall numbers (names) coorespond to drainage basins.



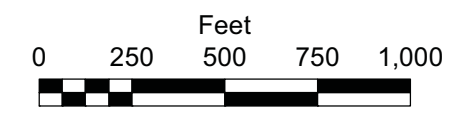
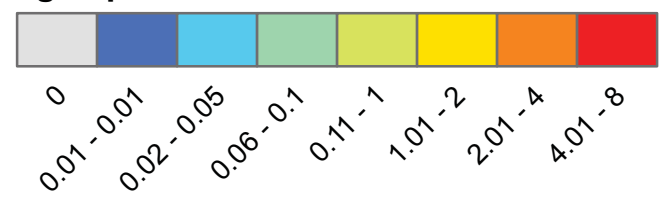
R:\Jobs\060003-01 East Waterway\_SedTrans\Maps\2011\_05\ReportFigs\_mass\_accum\_allruns.mxd kketteridge 6/9/2011 3:49:47 PM



**LEGEND**

● PTM Outfall Locations

**kg/ sq ft**

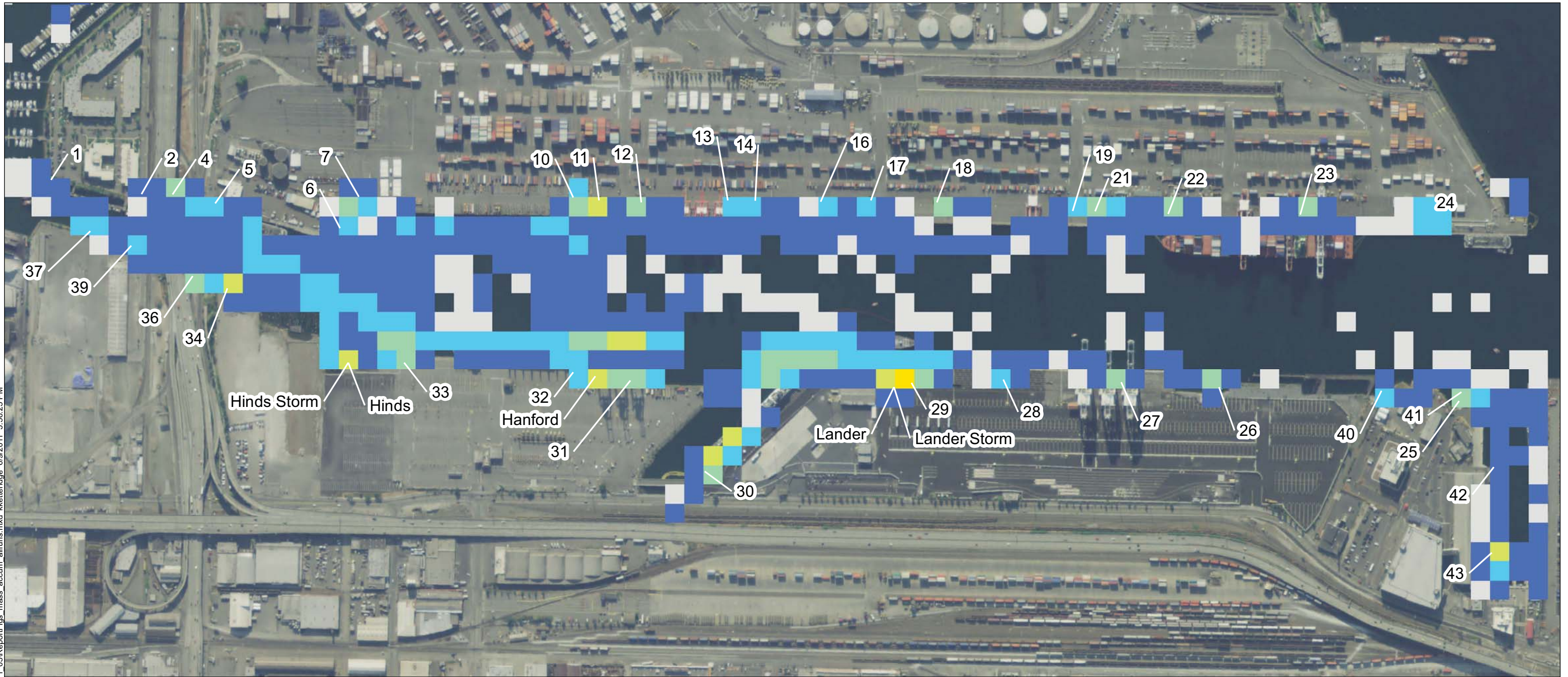


**NOTES:**

1. Deposition data (points) output from PTM model simulation has been represented by a 50 ft x 50 ft resolution raster map of mass accumulation per unit area (kg/sq ft)
2. Mass accumulation represents deposition over the simulation time (1 month with sources included, 2 weeks with sources turned off, for a total of 42 days).
3. Lander, Hanford, and Hines are CSOs.
4. Outfall numbers (names) coorespond to drainage basins.



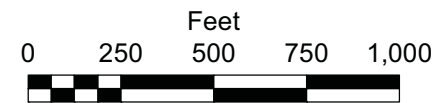
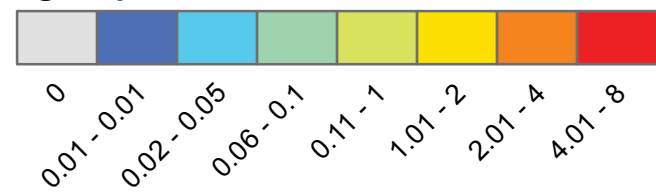
R:\Jobs\060003-01\_East\_Waterway\_SedTrans\Maps\2011\_05\ReportFigs\_mass\_accum\_allruns.mxd kkettridge 6/9/2011 5:56:25 PM



**LEGEND**

● PTM Outfall Locations

**kg / sq ft**

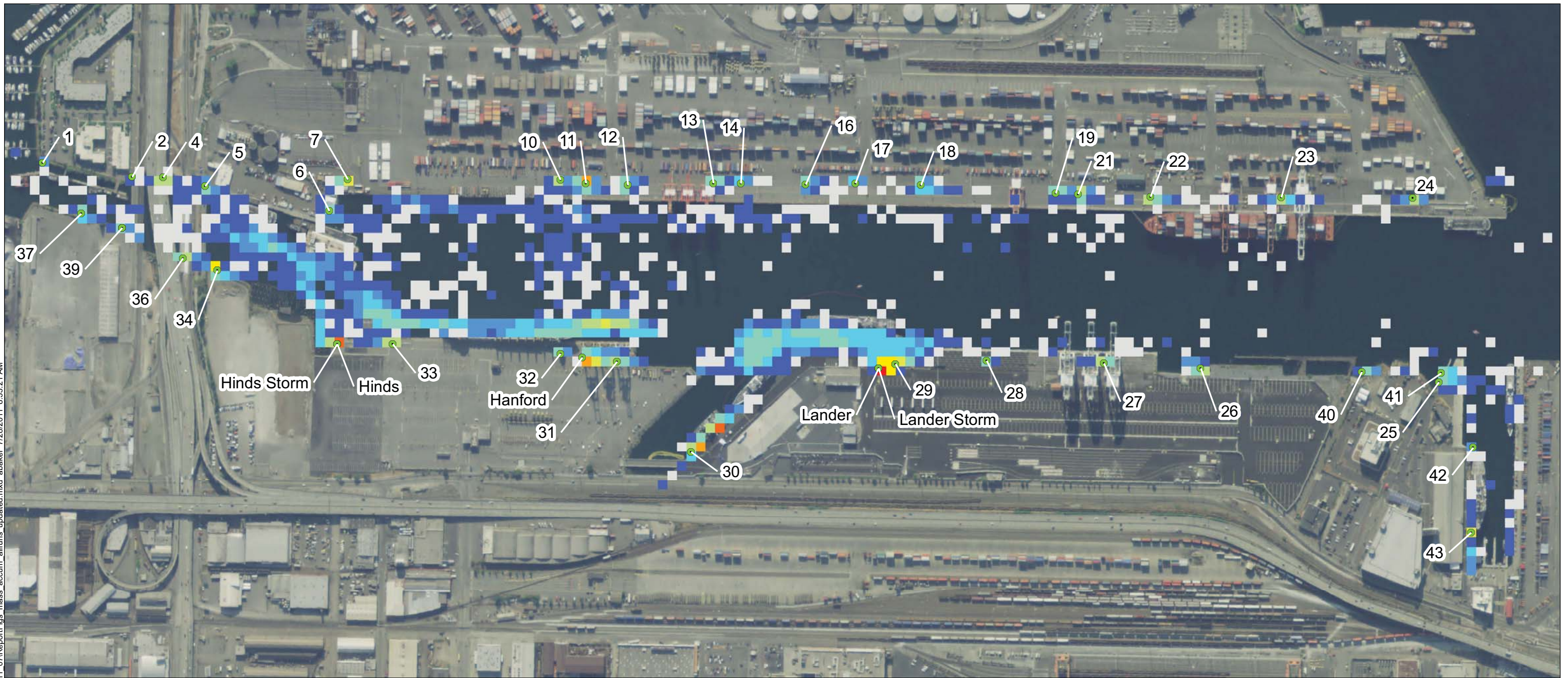


**NOTES:**

1. Deposition data (points) output from PTM model simulation has been represented by a 100 ft x 100 ft resolution raster map of mass accumulation per unit area (kg/sq ft)
2. Mass accumulation represents deposition over the simulation time (1 month with sources included, 2 weeks with sources turned off, for a total of 42 days).
3. Lander, Hanford, and Hines are CSOs.
4. Outfall numbers (names) coorespond to drainage basins.



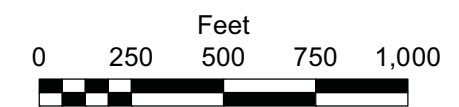
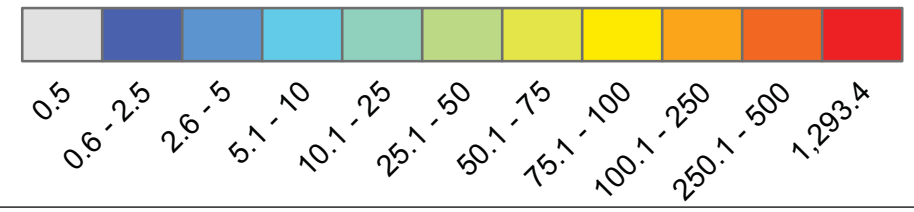
R:\Jobs\060003-01\_East\_Waterway\_SedTrans\Maps\2011\_07\ReportFigs\_mass\_accum\_allruns\_updated.mxd abaker 7/28/2011 8:33:21 AM



**LEGEND**

● PTM Outfall Locations

**Mass Accumulation (kg)**

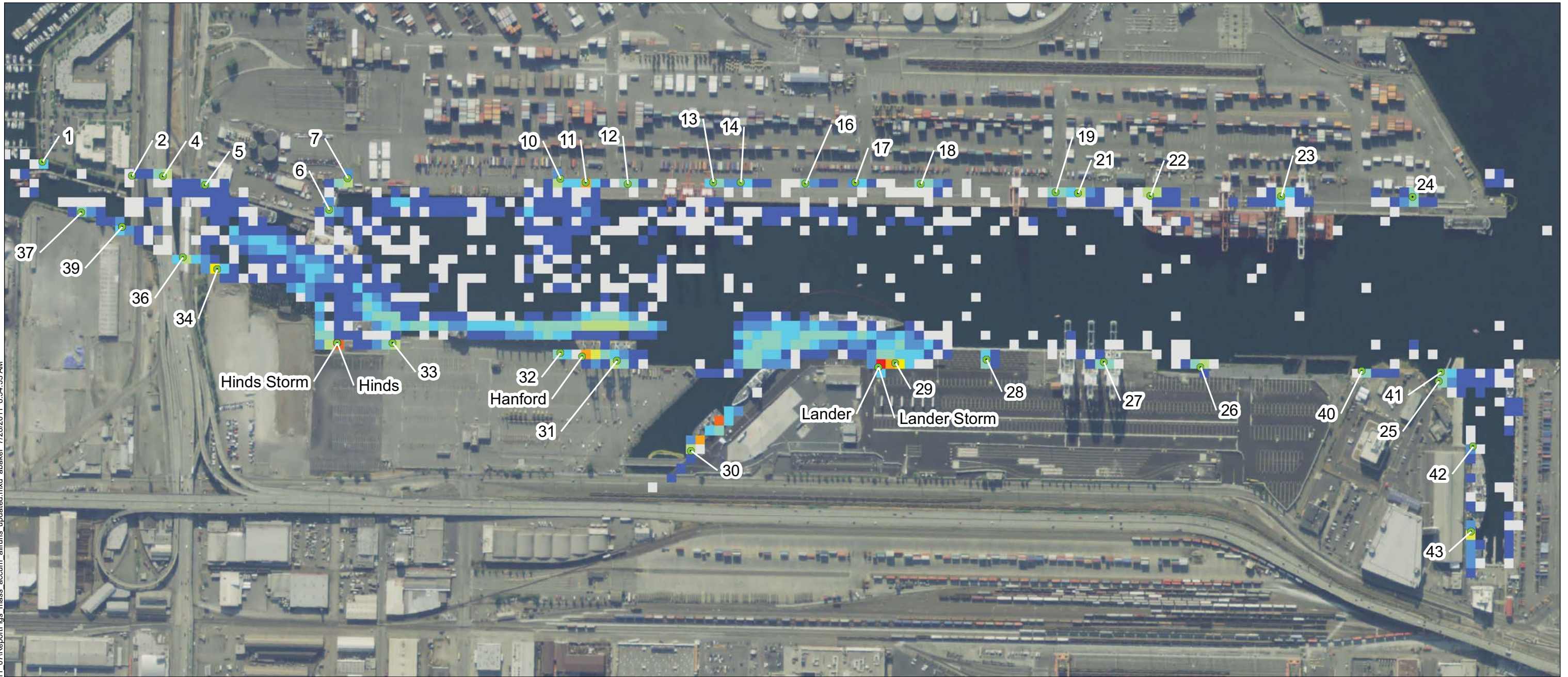


**NOTES:**

1. Deposition data (points) output from PTM model simulation has been represented by a 50 ft x 50 ft resolution raster map of mass accumulation (kg)
2. Mass accumulation represents deposition over the simulation time (1 month with sources included, 2 weeks with sources turned off, for a total of 42 days).
3. Lander, Hanford, and Hines are CSOs.
4. Outfall numbers (names) coorespond to drainage basins.



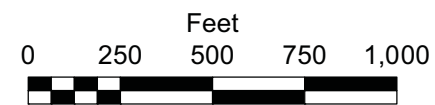
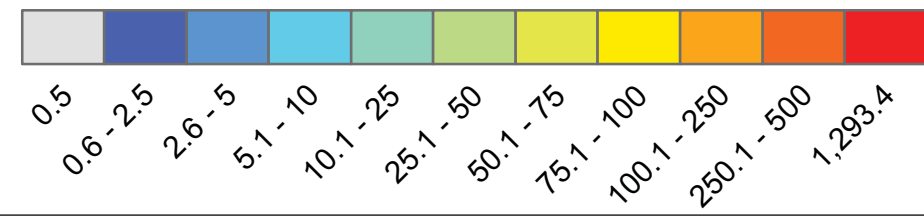
R:\Jobs\060003-01\_East\_Waterway\_SedTrans\Maps\2011\_07\ReportFigs\_mass\_accum\_allruns\_updated.mxd abaker 7/28/2011 8:34:33 AM



**LEGEND**

● PTM Outfall Locations

**Mass Accumulation (kg)**

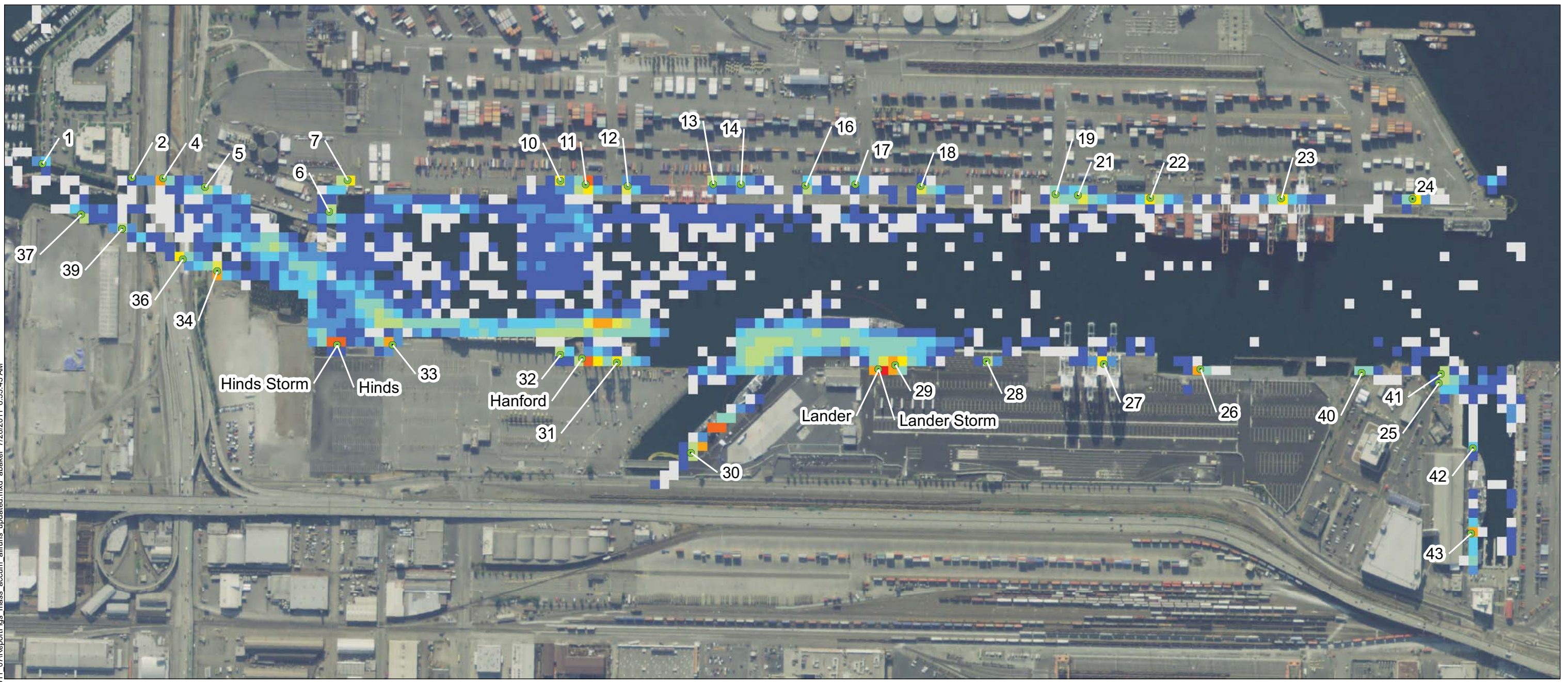


**NOTES:**

1. Deposition data (points) output from PTM model simulation has been represented by a 50 ft x 50 ft resolution raster map of mass accumulation (kg)
2. Mass accumulation represents deposition over the simulation time (1 month with sources included, 2 weeks with sources turned off, for a total of 42 days).
3. Lander, Hanford, and Hines are CSOs.
4. Outfall numbers (names) coorespond to drainage basins.



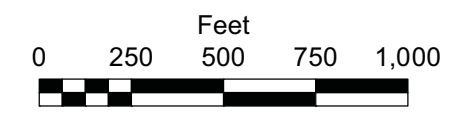
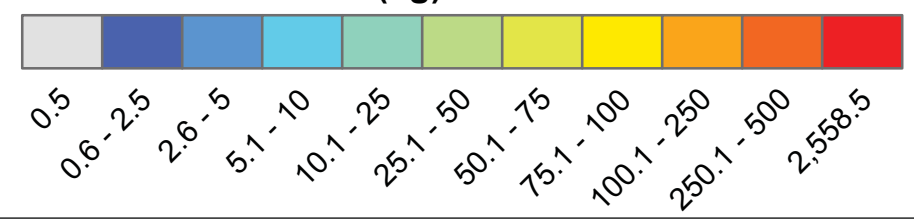
R:\Jobs\060003-01\_East\_Waterway\_SedTrans\Maps\2011\_07\ReportFigs\_mass\_accum\_allruns\_updated.mxd abaker 7/28/2011 8:35:43 AM



**LEGEND**

● PTM Outfall Locations

**Mass Accumulation (kg)**

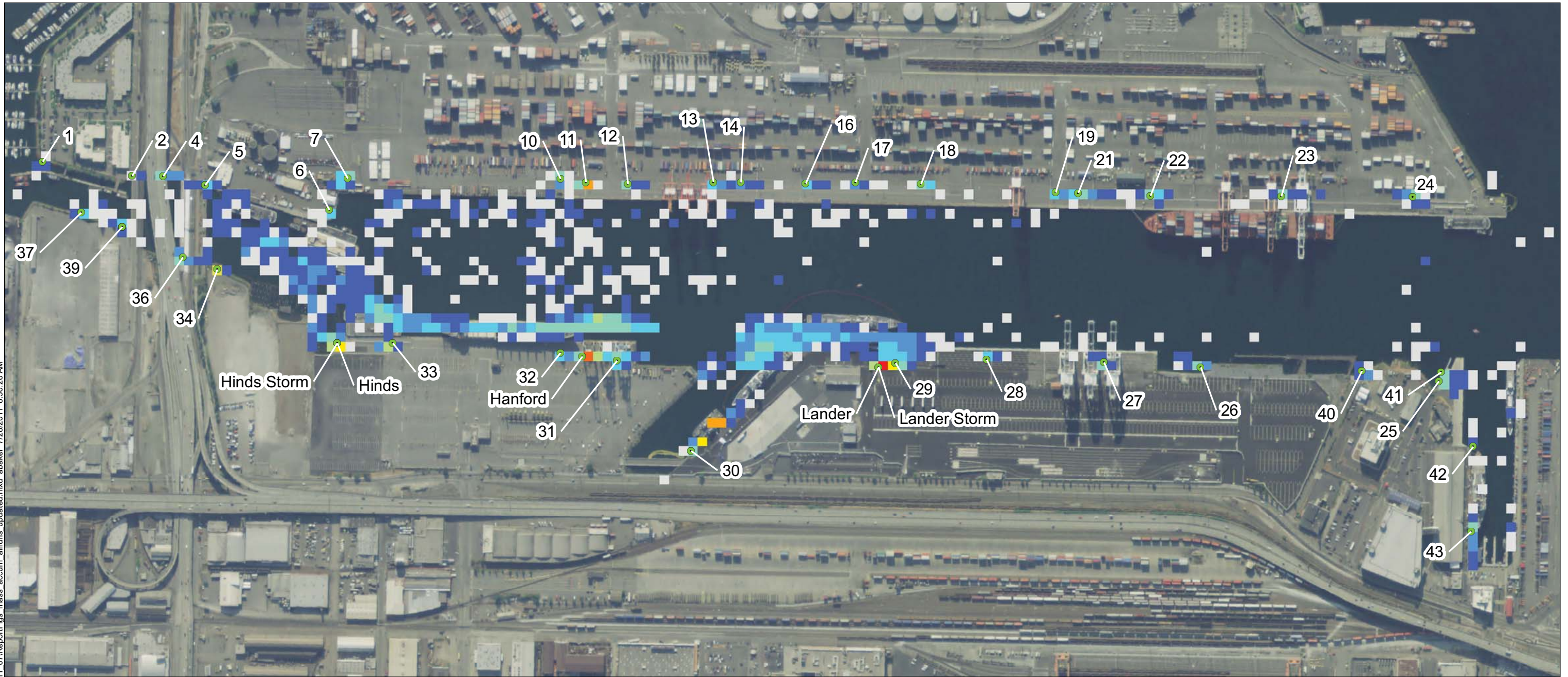


**NOTES:**

1. Deposition data (points) output from PTM model simulation has been represented by a 50 ft x 50 ft resolution raster map of mass accumulation (kg)
2. Mass accumulation represents deposition over the simulation time (1 month with sources included, 2 weeks with sources turned off, for a total of 42 days).
3. Lander, Hanford, and Hines are CSOs.
4. Outfall numbers (names) coorespond to drainage basins.



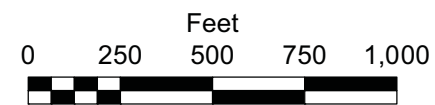
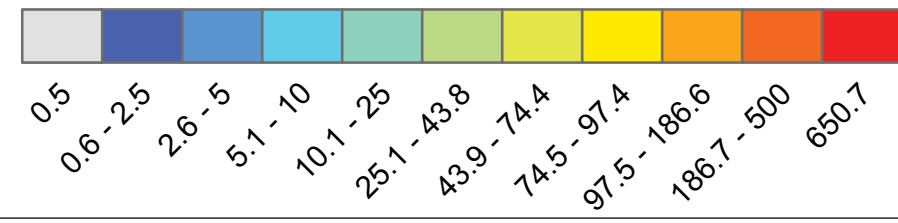
R:\Jobs\060003-01\_East\_Waterway\_SedTrans\Maps\2011\_07\ReportFigs\_mass\_accum\_allruns\_updated.mxd abaker 7/28/2011 8:36:26 AM



**LEGEND**

● PTM Outfall Locations

**Mass Accumulation (kg)**

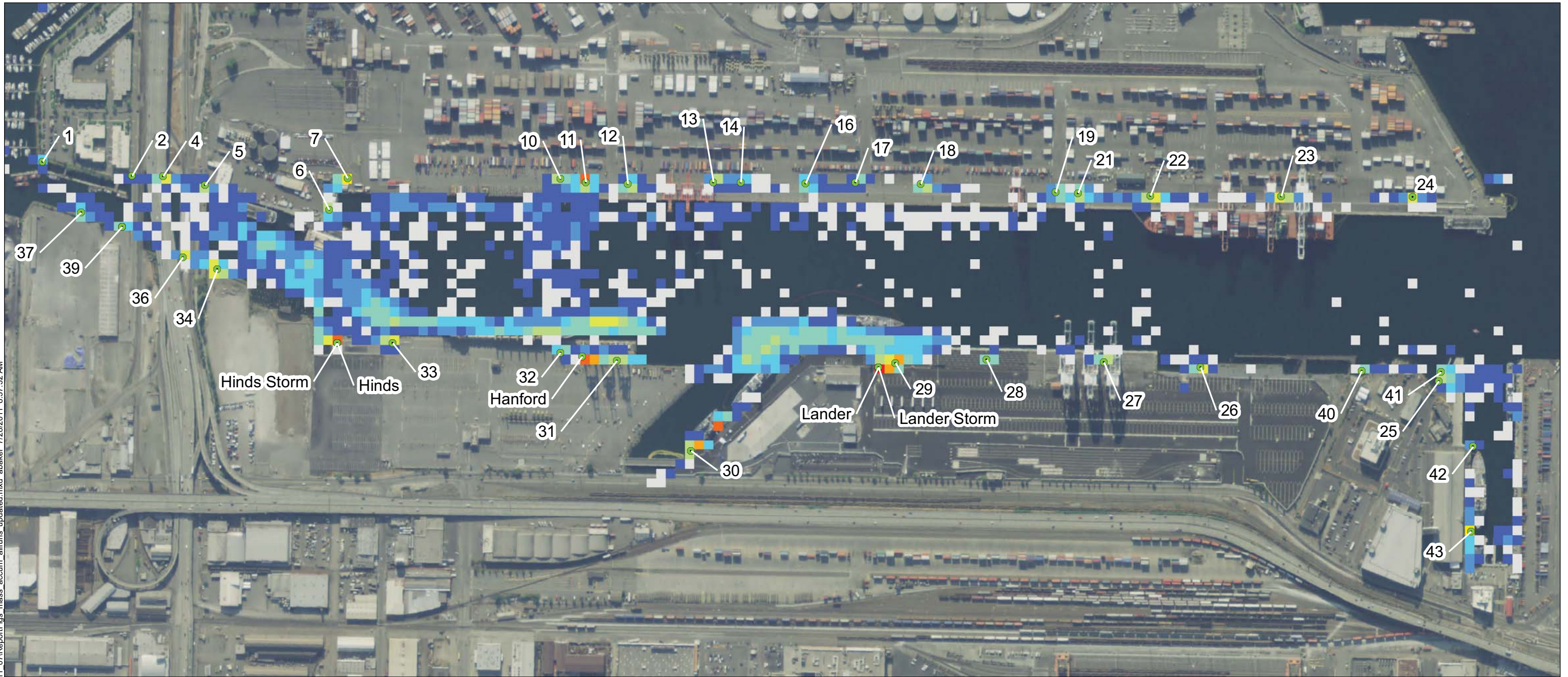


**NOTES:**

1. Deposition data (points) output from PTM model simulation has been represented by a 50 ft x 50 ft resolution raster map of mass accumulation (kg)
2. Mass accumulation represents deposition over the simulation time (1 month with sources included, 2 weeks with sources turned off, for a total of 42 days).
3. Lander, Hanford, and Hines are CSOs.
4. Outfall numbers (names) coorespond to drainage basins.



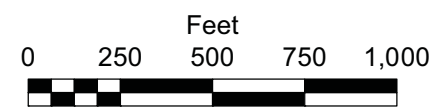
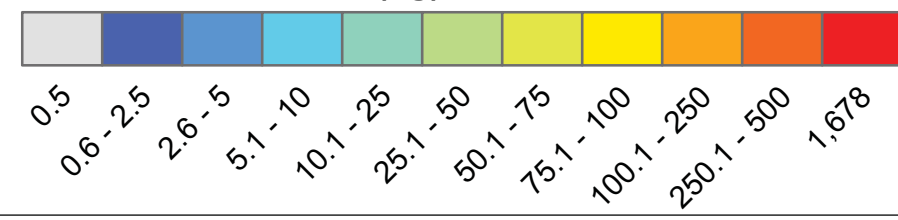
R:\Jobs\060003-01\_East\_Waterway\_SedTrans\Maps\2011\_07\ReportFigs\_mass\_accum\_allruns\_updated.mxd abaker 7/28/2011 8:37:32 AM



**LEGEND**

● PTM Outfall Locations

**Mass Accumulation (kg)**

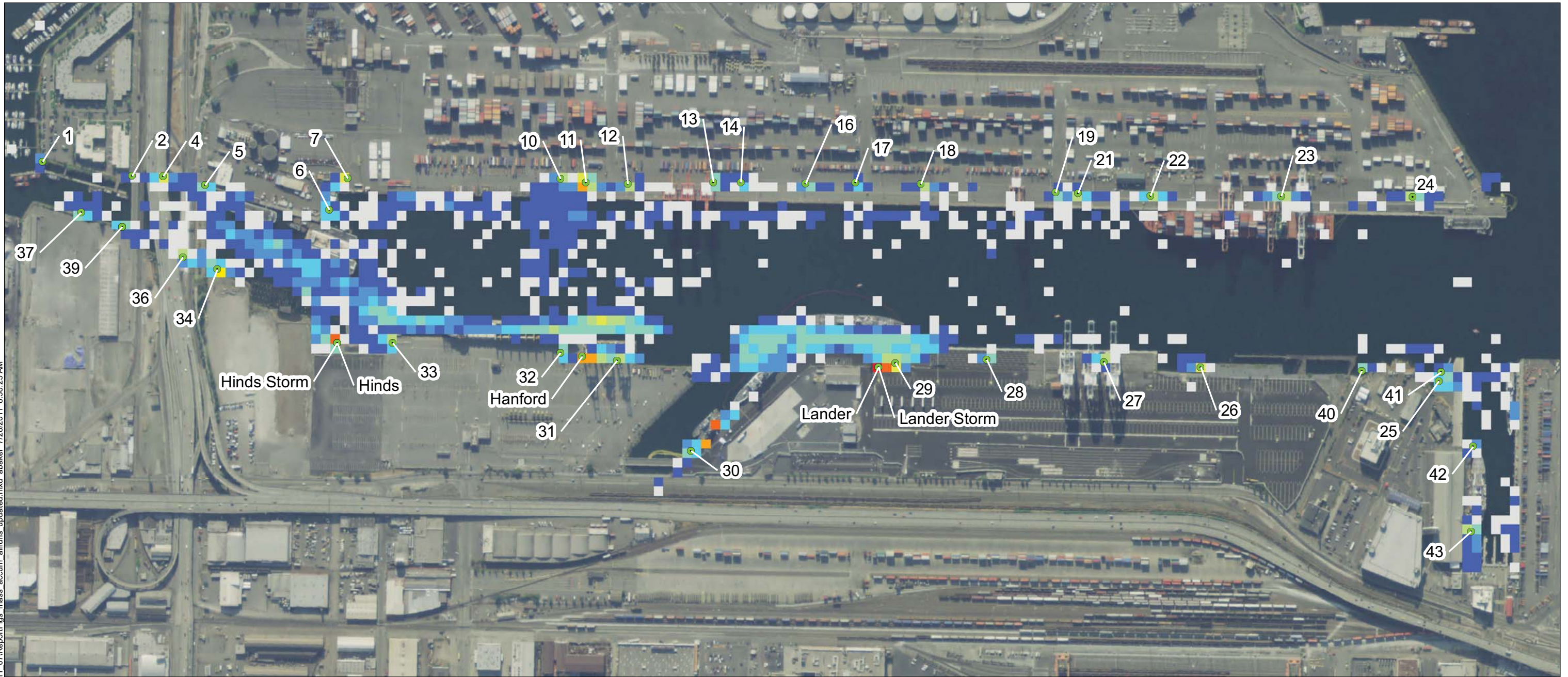


**NOTES:**

1. Deposition data (points) output from PTM model simulation has been represented by a 50 ft x 50 ft resolution raster map of mass accumulation (kg)
2. Mass accumulation represents deposition over the simulation time (1 month with sources included, 2 weeks with sources turned off, for a total of 42 days).
3. Lander, Hanford, and Hines are CSOs.
4. Outfall numbers (names) coorespond to drainage basins.



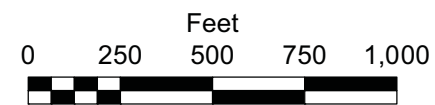
R:\Jobs\060003-01\_East\_Waterway\_SedTrans\Maps\2011\_07\ReportFigs\_mass\_accum\_allruns\_updated.mxd abaker 7/28/2011 8:38:25 AM



**LEGEND**

● PTM Outfall Locations

**Mass Accumulation (kg)**

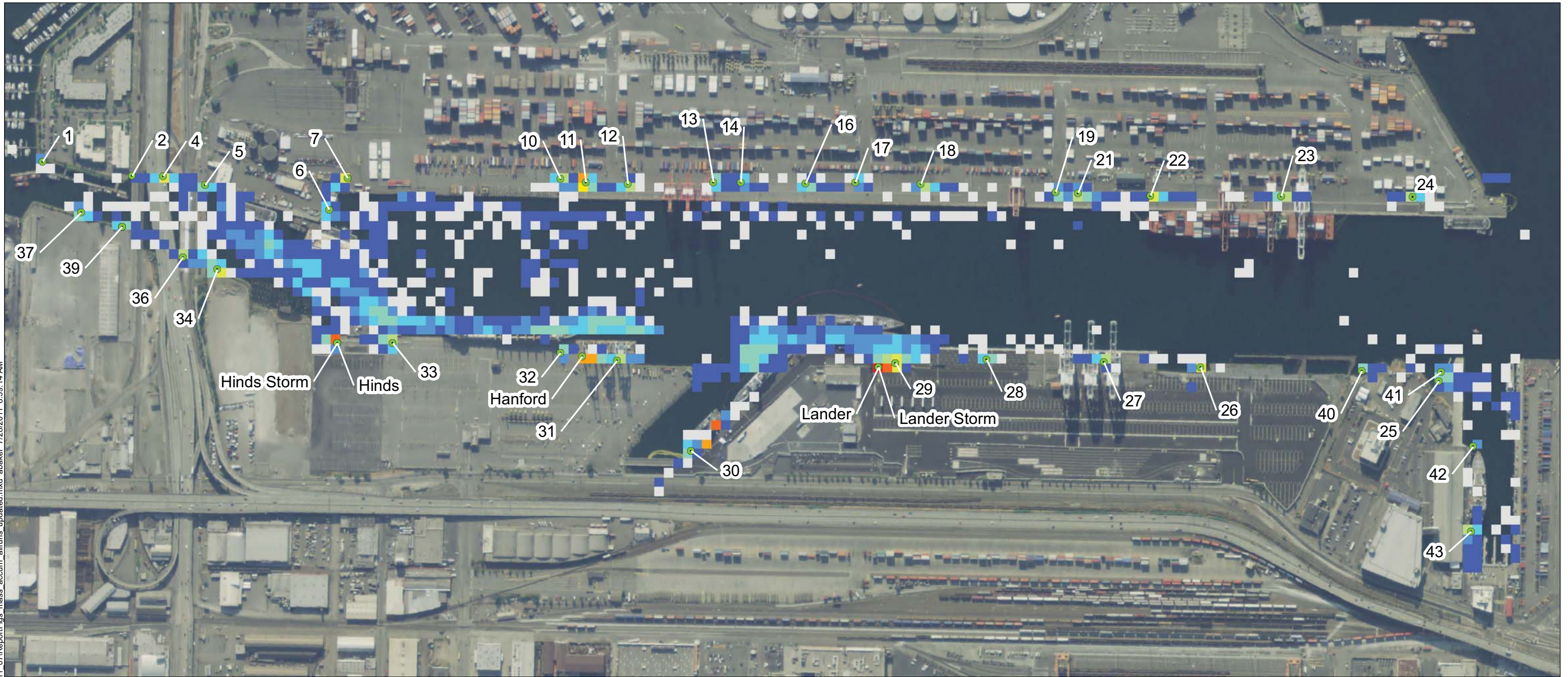


**NOTES:**

1. Deposition data (points) output from PTM model simulation has been represented by a 50 ft x 50 ft resolution raster map of mass accumulation (kg)
2. Mass accumulation represents deposition over the simulation time (1 month with sources included, 2 weeks with sources turned off, for a total of 42 days).
3. Lander, Hanford, and Hines are CSOs.
4. Outfall numbers (names) coorespond to drainage basins.



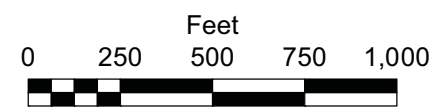
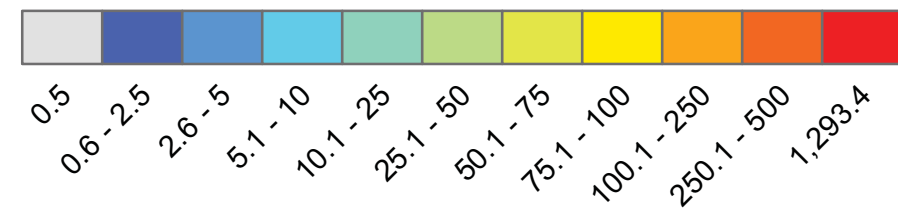
R:\Jobs\060003-01\_East\_Waterway\_SedTrans\Maps\2011\_07\ReportFigs\_mass\_accum\_allruns\_updated.mxd abaker 7/28/2011 8:39:14 AM



**LEGEND**

● PTM Outfall Locations

**Mass Accumulation (kg)**

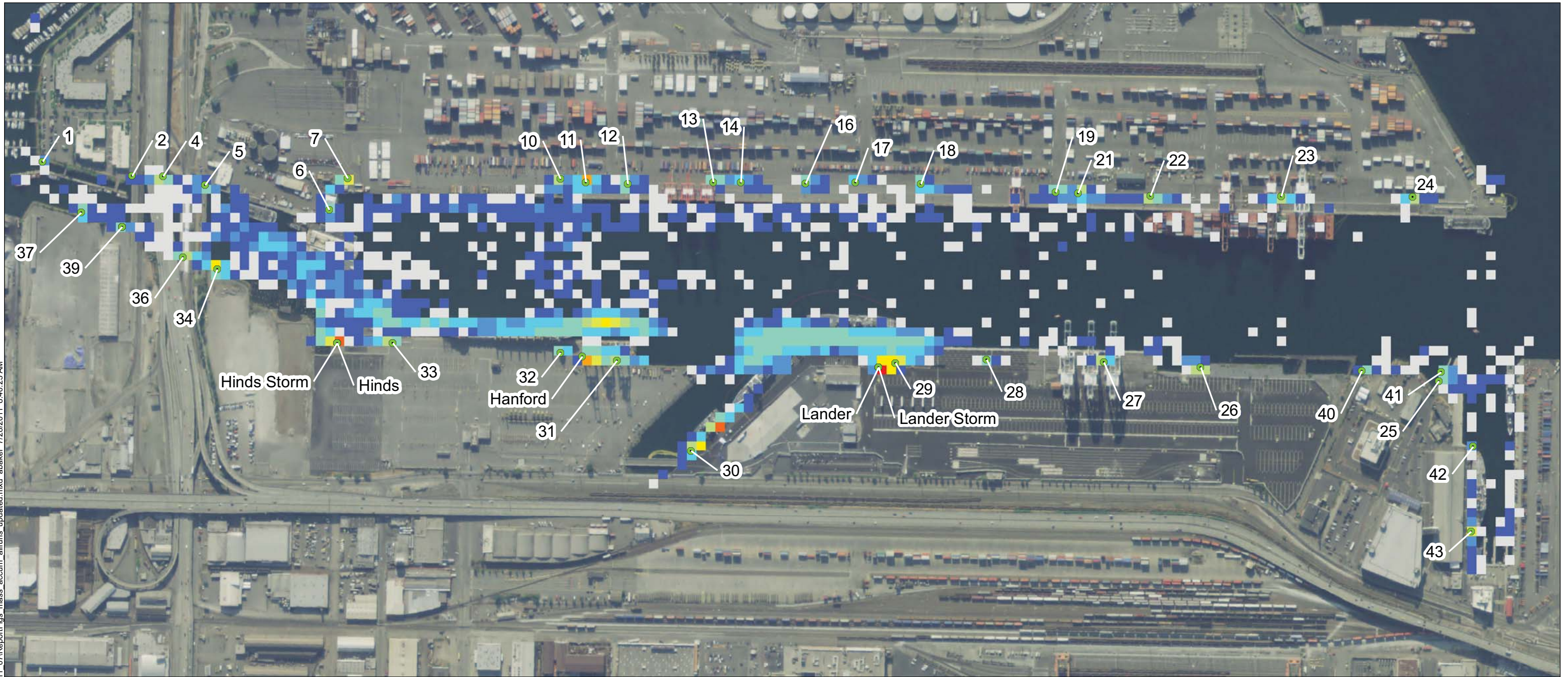


**NOTES:**

1. Deposition data (points) output from PTM model simulation has been represented by a 50 ft x 50 ft resolution raster map of mass accumulation (kg)
2. Mass accumulation represents deposition over the simulation time (1 month with sources included, 2 weeks with sources turned off, for a total of 42 days).
3. Lander, Hanford, and Hines are CSOs.
4. Outfall numbers (names) coorespond to drainage basins.



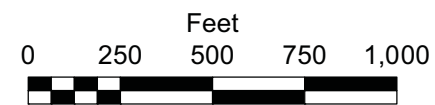
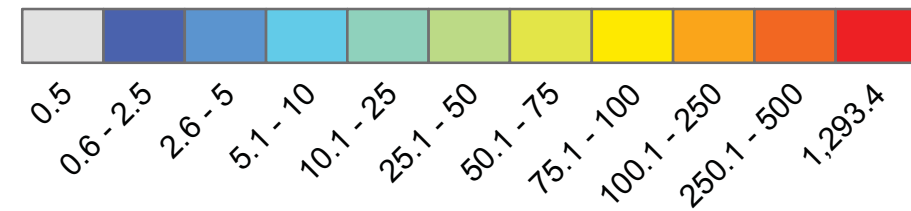
R:\Jobs\060003-01\_East\_Waterway\_SedTrans\Maps\2011\_07\ReportFigs\_mass\_accum\_allruns\_updated.mxd abaker 7/28/2011 8:40:25 AM



**LEGEND**

● PTM Outfall Locations

**Mass Accumulation (kg)**

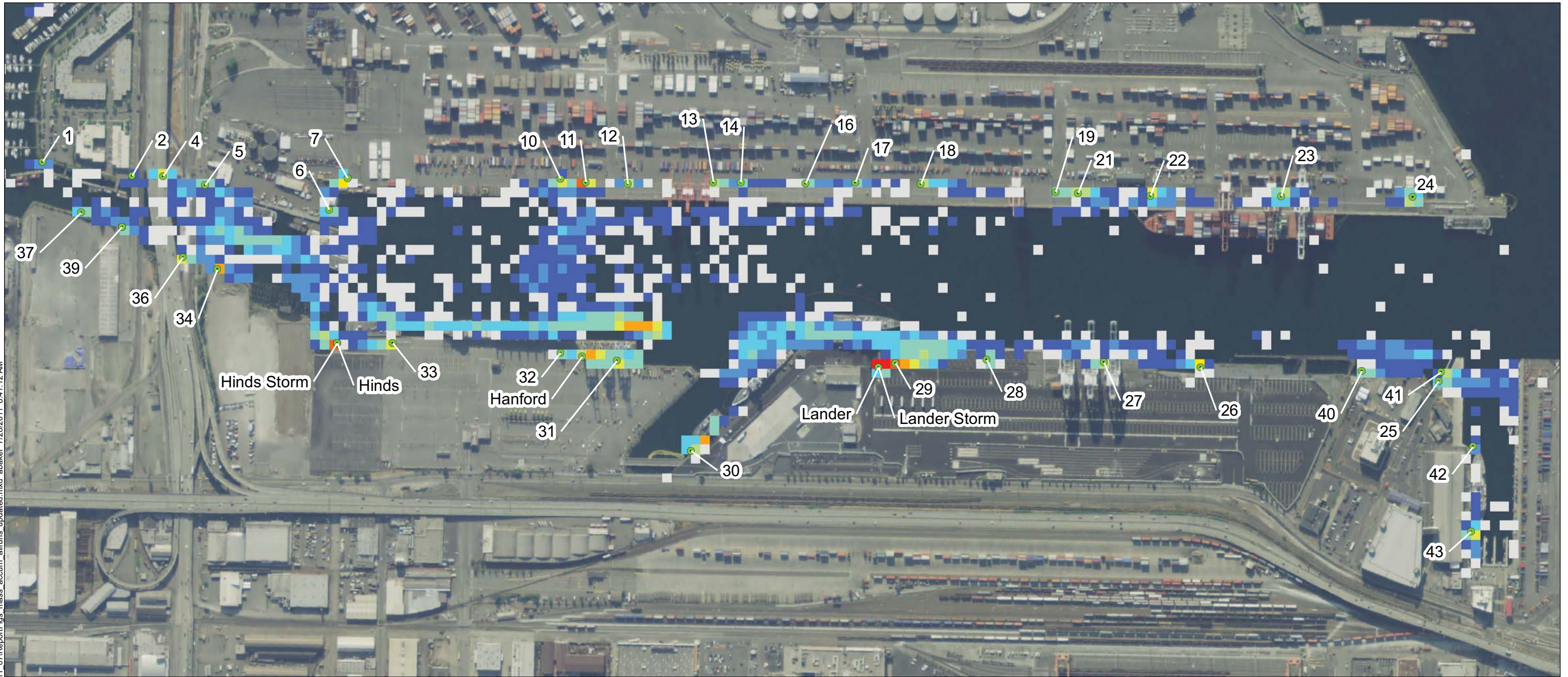


**NOTES:**

1. Deposition data (points) output from PTM model simulation has been represented by a 50 ft x 50 ft resolution raster map of mass accumulation (kg)
2. Mass accumulation represents deposition over the simulation time (1 month with sources included, 2 weeks with sources turned off, for a total of 42 days).
3. Lander, Hanford, and Hines are CSOs.
4. Outfall numbers (names) coorespond to drainage basins.



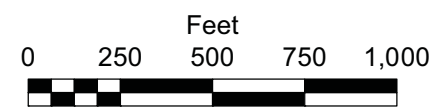
R:\Jobs\060003-01\_East\_Waterway\_SedTrans\Maps\2011\_07\ReportFigs\_mass\_accum\_allruns\_updated.mxd abaker 7/28/2011 8:41:12 AM



**LEGEND**

● PTM Outfall Locations

**Mass Accumulation (kg)**



**NOTES:**

1. Deposition data (points) output from PTM model simulation has been represented by a 50 ft x 50 ft resolution raster map of mass accumulation (kg)
2. Mass accumulation represents deposition over the simulation time (1 month with sources included, 2 weeks with sources turned off, for a total of 42 days).
3. Lander, Hanford, and Hines are CSOs.
4. Outfall numbers (names) coorespond to drainage basins.



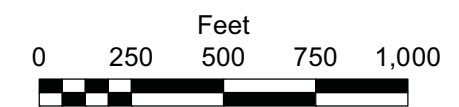
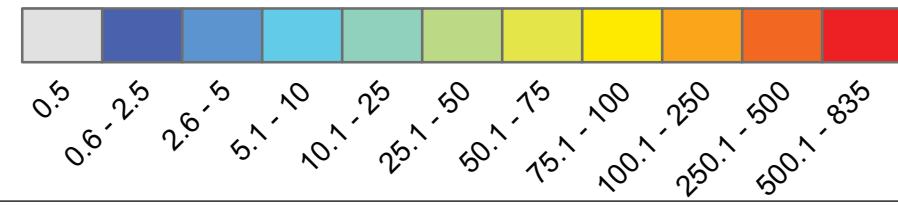
R:\Jobs\060003-01\_East\_Waterway\_SedTrans\Maps\2011\_07\ReportFigs\_mass\_accum\_allruns\_updated.mxd abaker 7/28/2011 8:49:44 AM



**LEGEND**

● PTM Outfall Locations

**Mass Accumulation (kg)**

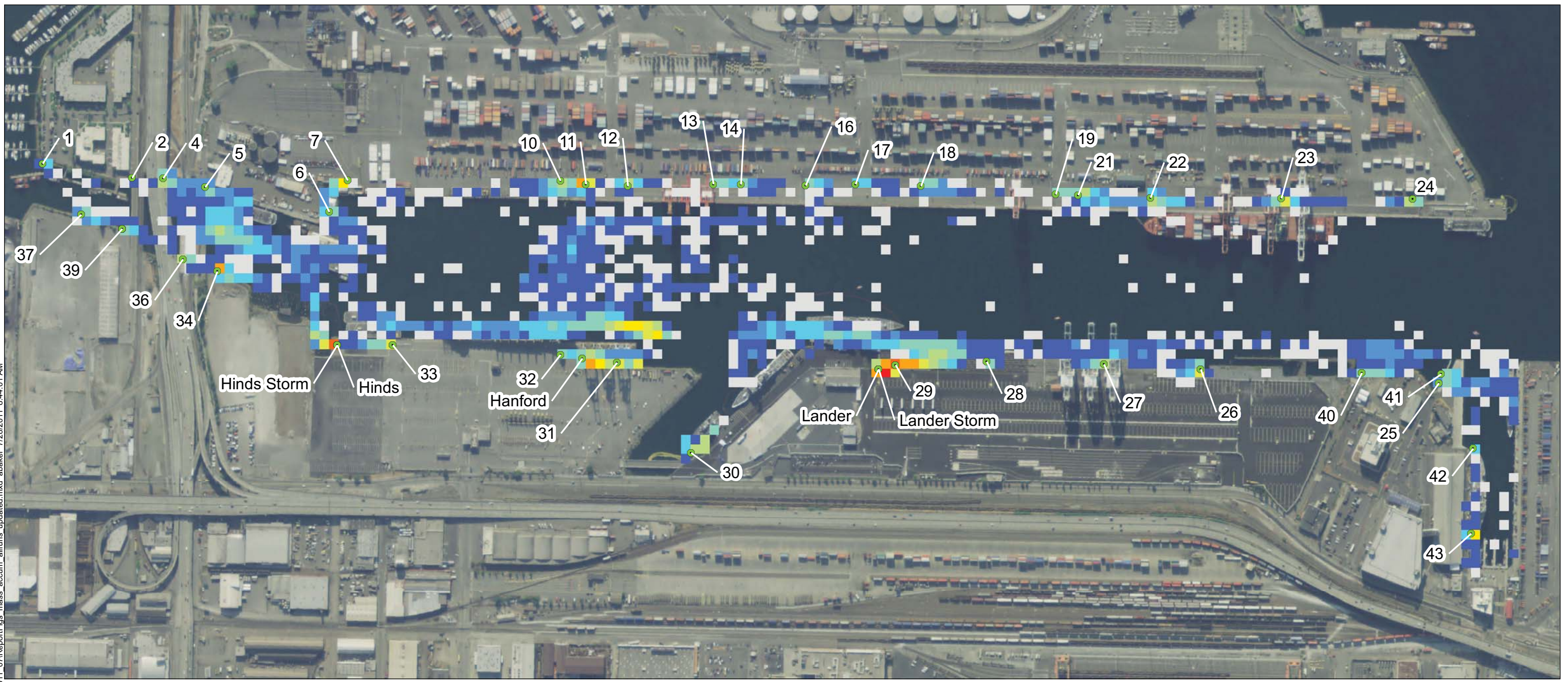


**NOTES:**

1. Deposition data (points) output from PTM model simulation has been represented by a 50 ft x 50 ft resolution raster map of mass accumulation (kg)
2. Mass accumulation represents deposition over the simulation time (1 month with sources included, 2 weeks with sources turned off, for a total of 42 days).
3. Lander, Hanford, and Hines are CSOs.
4. Outfall numbers (names) coorespond to drainage basins.



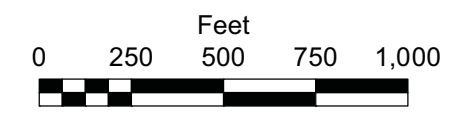
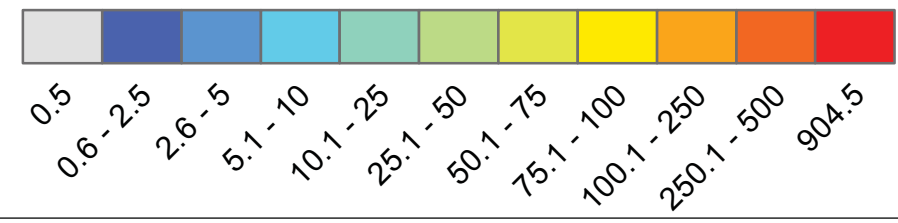
R:\Jobs\060003-01\_East\_Waterway\_SedTrans\Maps\2011\_07\ReportFigs\_mass\_accum\_allruns\_updated.mxd abaker 7/28/2011 8:44:01 AM



**LEGEND**

● PTM Outfall Locations

**Mass Accumulation (kg)**

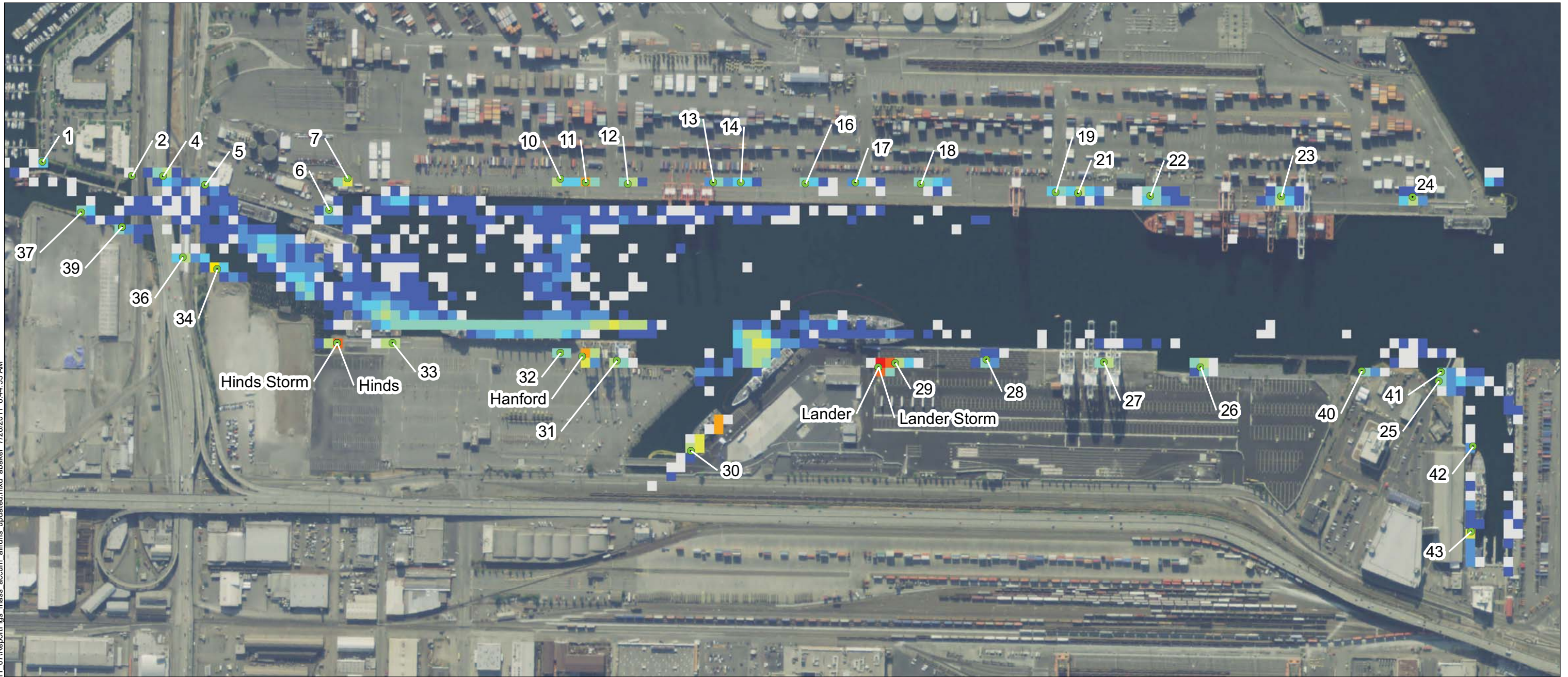


**NOTES:**

1. Deposition data (points) output from PTM model simulation has been represented by a 50 ft x 50 ft resolution raster map of mass accumulation (kg)
2. Mass accumulation represents deposition over the simulation time (1 month with sources included, 2 weeks with sources turned off, for a total of 42 days).
3. Lander, Hanford, and Hines are CSOs.
4. Outfall numbers (names) coorespond to drainage basins.



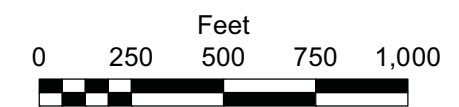
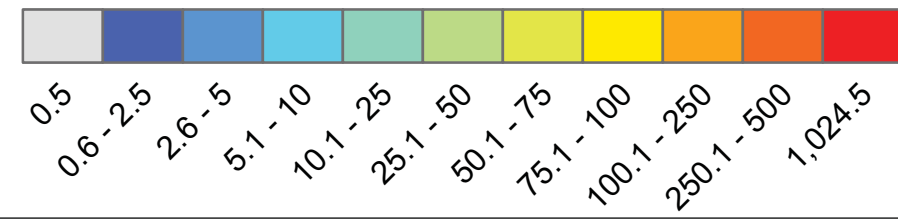
R:\Jobs\060003-01\_East\_Waterway\_SedTrans\Maps\2011\_07\ReportFigs\_mass\_accum\_allruns\_updated.mxd abaker 7/28/2011 8:44:53 AM



**LEGEND**

● PTM Outfall Locations

**Mass Accumulation (kg)**

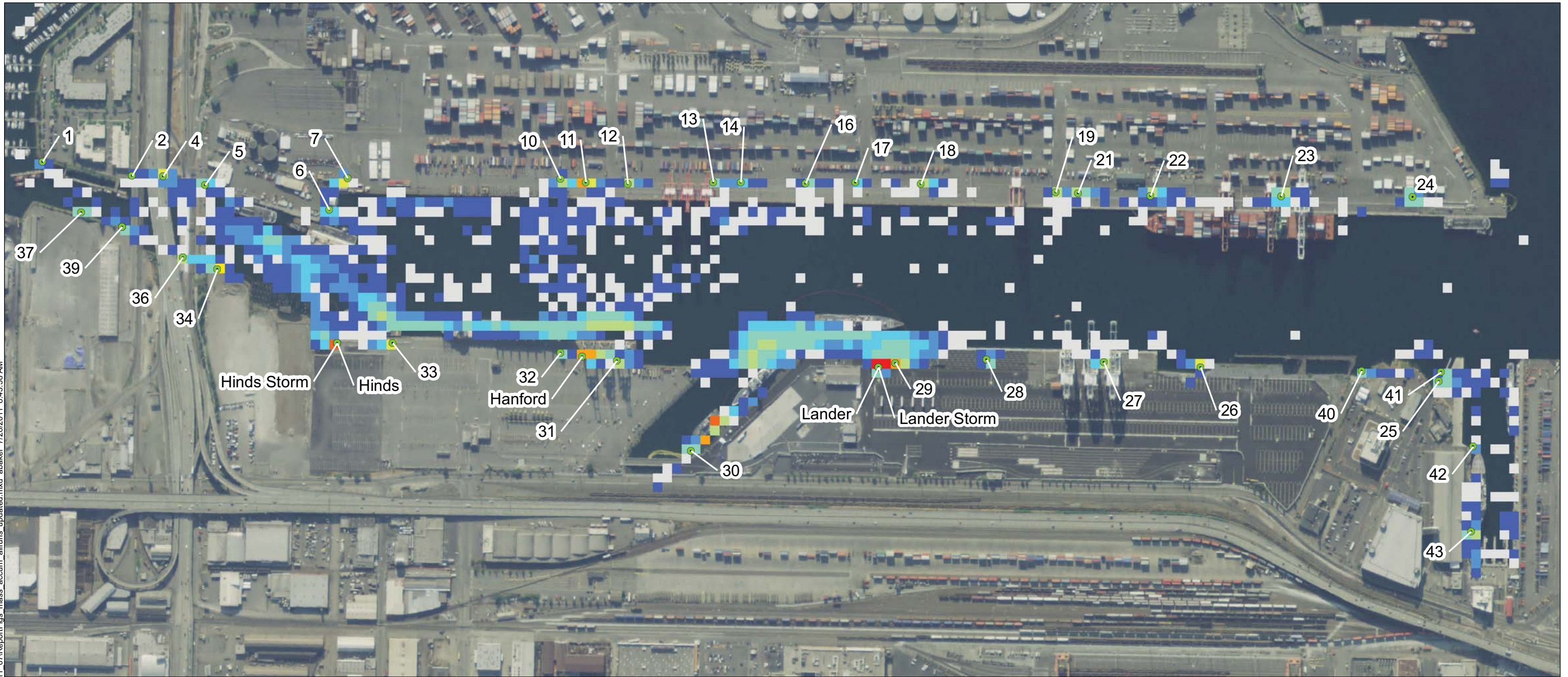


**NOTES:**

1. Deposition data (points) output from PTM model simulation has been represented by a 50 ft x 50 ft resolution raster map of mass accumulation (kg)
2. Mass accumulation represents deposition over the simulation time (1 month with sources included, 2 weeks with sources turned off, for a total of 42 days).
3. Lander, Hanford, and Hines are CSOs.
4. Outfall numbers (names) coorespond to drainage basins.



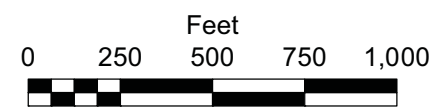
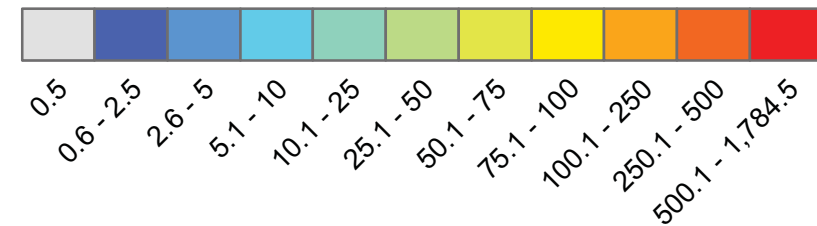
R:\Jobs\060003-01\_East\_Waterway\_SedTrans\Maps\2011\_07\ReportFigs\_mass\_accum\_allruns\_updated.mxd abaker 7/28/2011 8:45:58 AM



**LEGEND**

● PTM Outfall Locations

**Mass Accumulation (kg)**

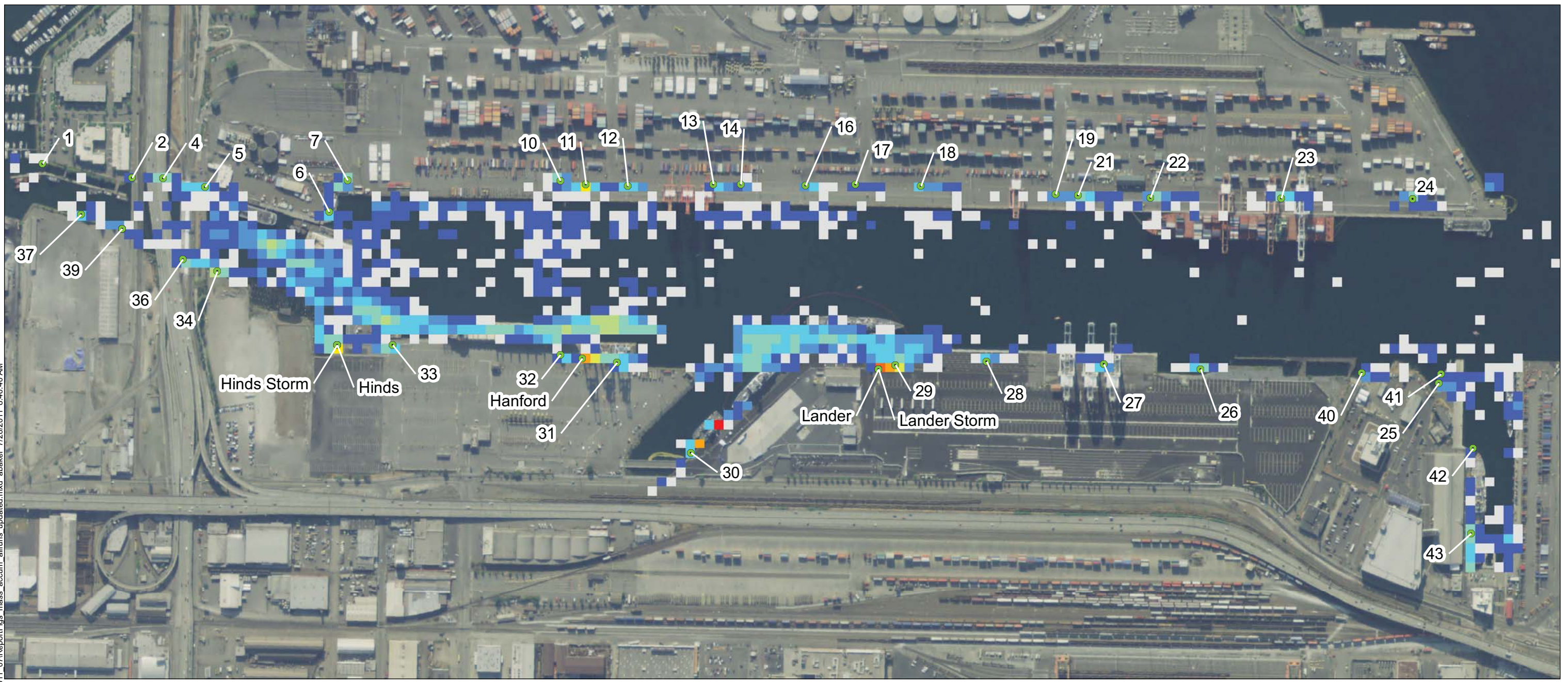


**NOTES:**

1. Deposition data (points) output from PTM model simulation has been represented by a 50 ft x 50 ft resolution raster map of mass accumulation (kg)
2. Mass accumulation represents deposition over the simulation time (1 month with sources included, 2 weeks with sources turned off, for a total of 42 days).
3. Lander, Hanford, and Hines are CSOs.
4. Outfall numbers (names) coorespond to drainage basins.



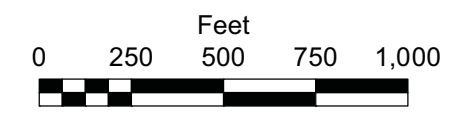
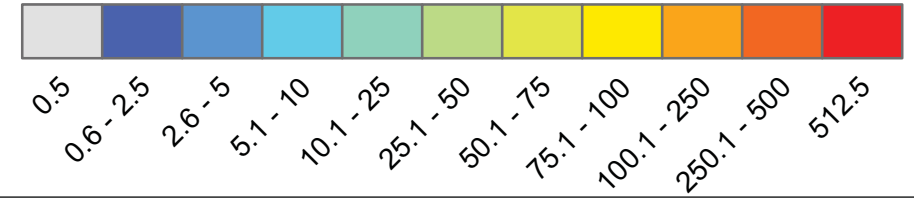
R:\Jobs\060003-01\_East\_Waterway\_SedTrans\Maps\2011\_07\ReportFigs\_mass\_accum\_allruns\_updated.mxd abaker 7/28/2011 8:46:40 AM



**LEGEND**

● PTM Outfall Locations

**Mass Accumulation (kg)**



**NOTES:**

1. Deposition data (points) output from PTM model simulation has been represented by a 50 ft x 50 ft resolution raster map of mass accumulation (kg)
2. Mass accumulation represents deposition over the simulation time (1 month with sources included, 2 weeks with sources turned off, for a total of 42 days).
3. Lander, Hanford, and Hines are CSOs.
4. Outfall numbers (names) coorespond to drainage basins.